



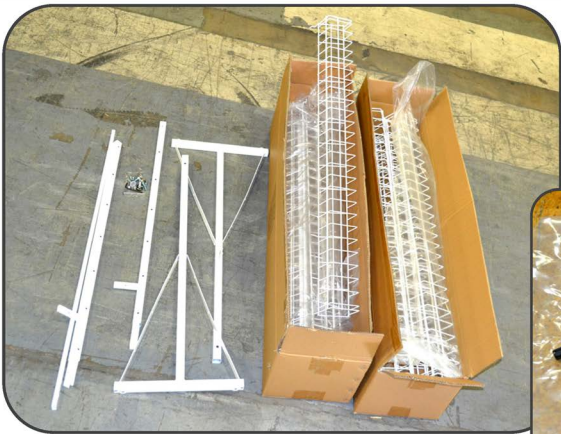
A comprehensive guide to:

- Display Assembly
 - Parts
- Shipping Supplies
- Supplemental Materials

Wire Vertical 13 Pocket One Sided Display

WIRE VERTICAL 13 POCKET ONE SIDED DISPLAY

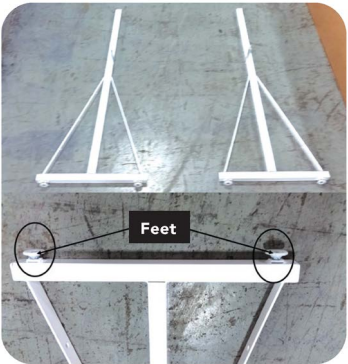
ITEM 917



PARTS INCLUDED: (1) Header holder; (2) Vertical Support Bars; (2) Base; (2) Horizontal Support Bars; (6) Screws (1) Wrench; (4) Levelers; (13) Pocket Packet Arms; (1) Header Sign; **NOTE:** *Casters not recommended for this display*

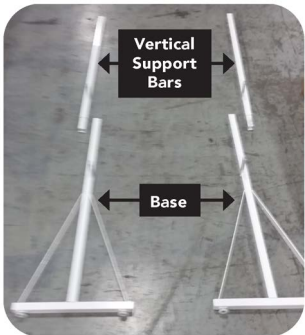
STEP 1

Screw feet into holes on bottom of triangular base pieces



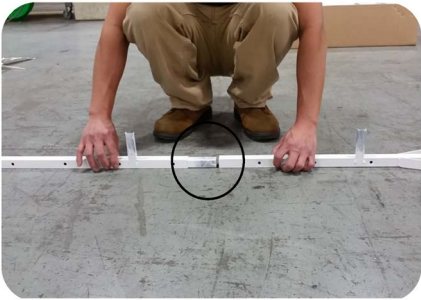
STEP 2

Locate vertical support bars



STEP 3

Insert vertical support bars into triangular base pieces



STEP 4

Locate horizontal support bars



STEP 5

Turn bases on their sides and align horizontal support bars with protruding tabs



STEP 6

Insert horizontal support bars onto tabs.



STEP 7

Stand unit upright with holes on vertical supports facing forward



continued on page 00

WIRE VERTICAL 13 POCKET ONE SIDED DISPLAY

ITEM 917

continued from page 00

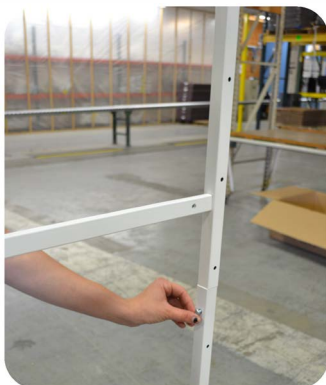
STEP 8

Secure horizontal support bars into base with the provided screws on each side



STEP 9

Secure vertical support bars into base with the provided screws on each side



STEP 10

Insert hooks on 13 pocket arm into holes on vertical bars. Repeat for each row



STEP 11

Your completed rack should look like this



STEP 12

Insert header holder clips into openings at top of vertical support bars



STEP 13

Slide header into center clip on header holder

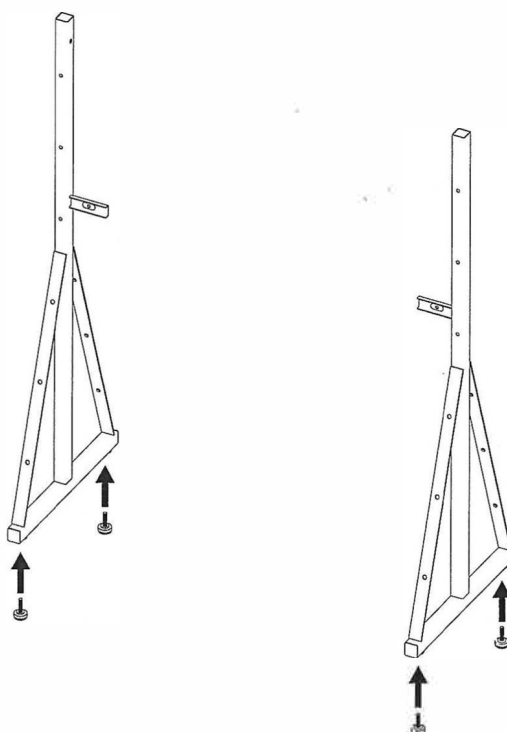
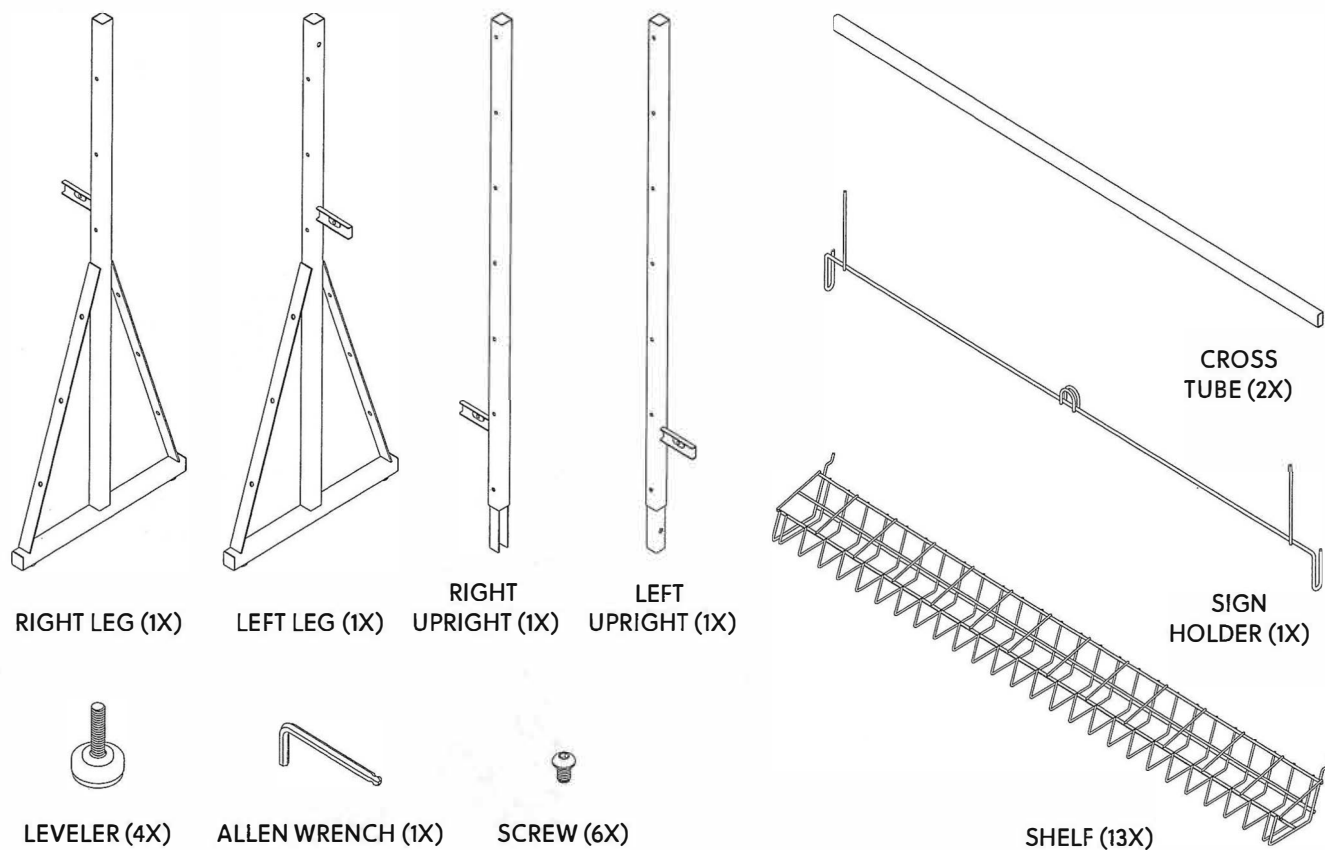


*Example of completed
Wire Vertical 13 Pocket
One Sided Display
with header & product*



WIRE VERTICAL 13 POCKET ONE SIDED DISPLAY

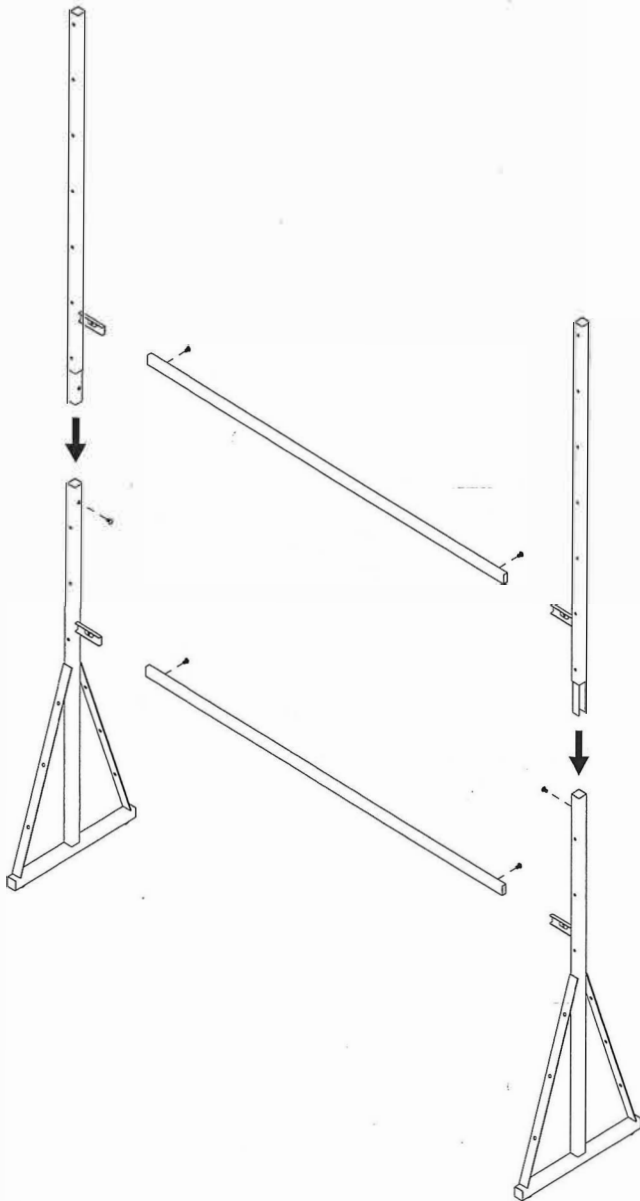
ITEM 917



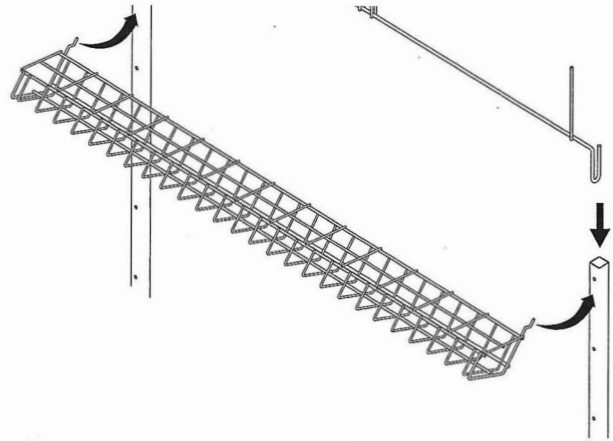
- 1 Screw the 4 Levelers into the threaded bosses on the bottoms of the Right and Left Leg.

WIRE VERTICAL 13 POCKET ONE SIDED DISPLAY

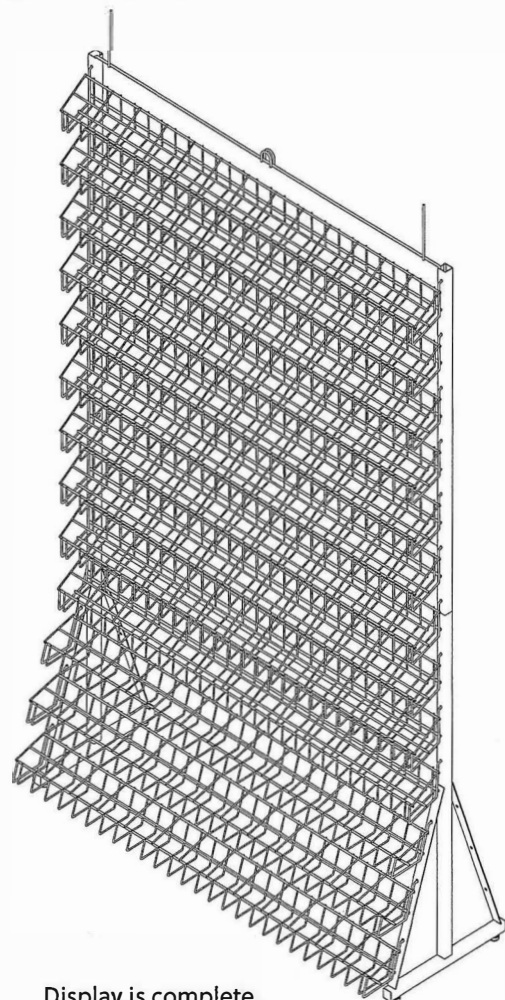
ITEM 917



- 2** Insert the Right Upright into the Right Leg and Left Upright into the Left Leg. Use the 2 Cross Tubes to attach the Right and Left assemblies. Secure all parts with Screws.



- 4** Insert Sign Holder into the tubes of the Left and Right Uprights as shown. Hang Shelf by inserting the hooks of the Shelf into the holes in the frame. Repeat with remaining Shelves.



Display is complete.